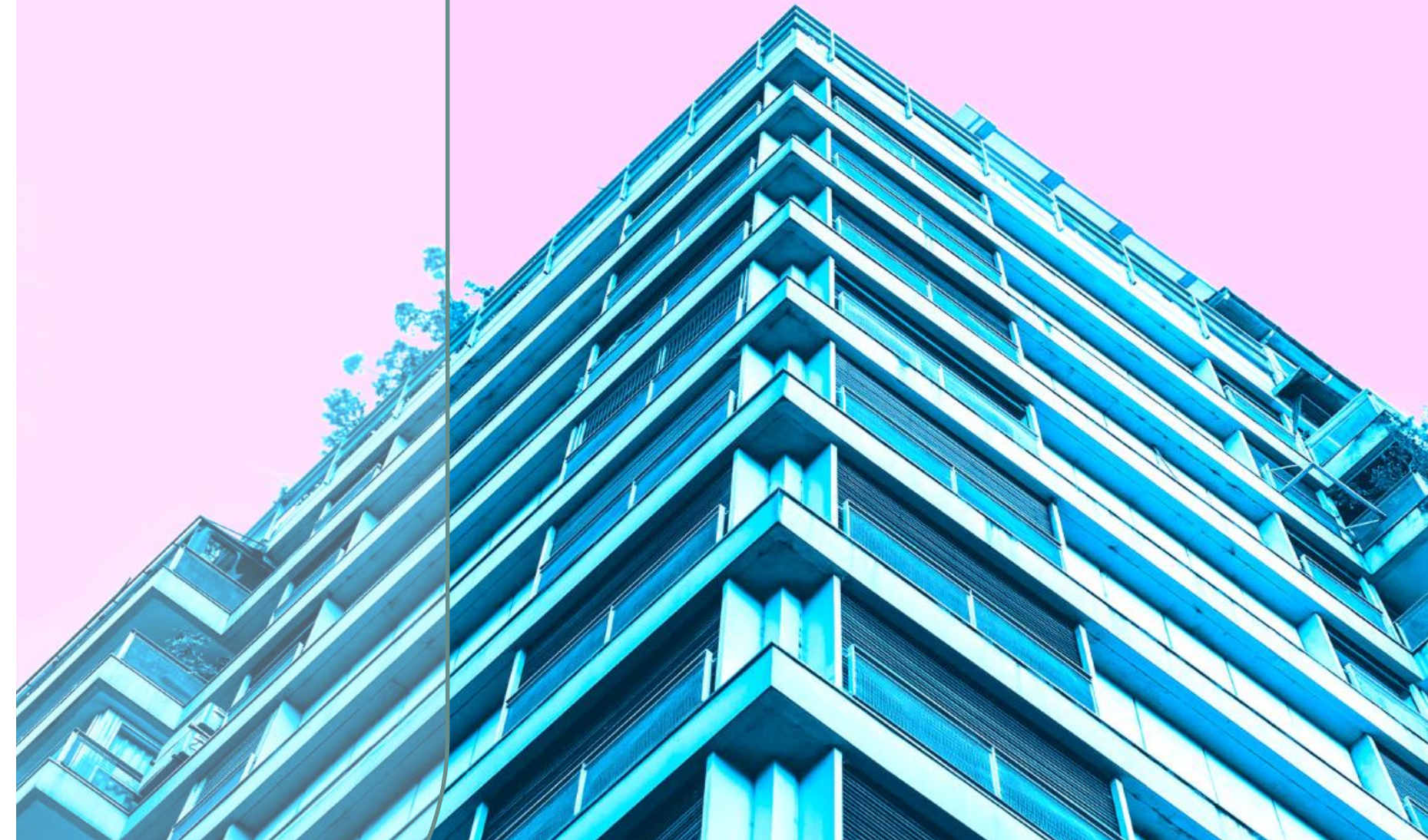




**Welcome to**

# Sky Touch Magical



# What We Do?

"At Sky Touch Magical, we specialize in turning investments into magical financial experiences. Introducing our exclusive Business Plan, designed to generate a regular income stream. Elevate your financial journey with the perfect blend of online shopping thrills and lucrative returns.

## Sky Touch Magical

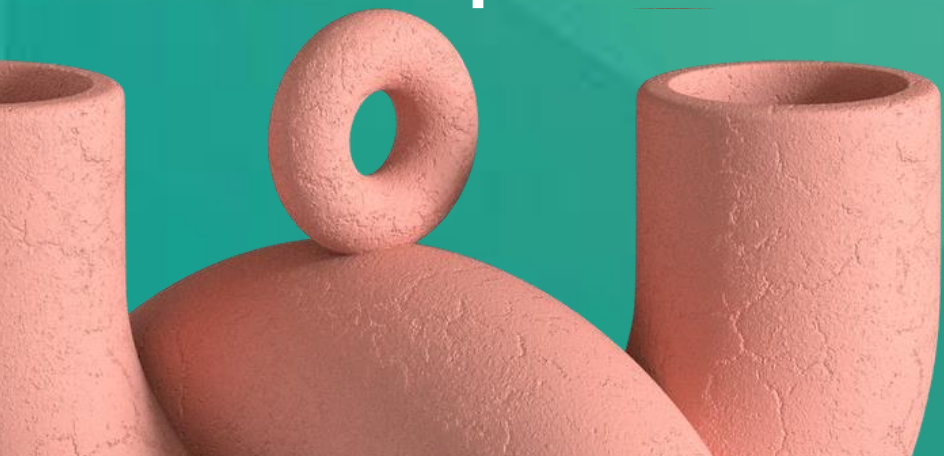
– Where Dreams meet Financial Growth!"



# JOINING PACKAGES

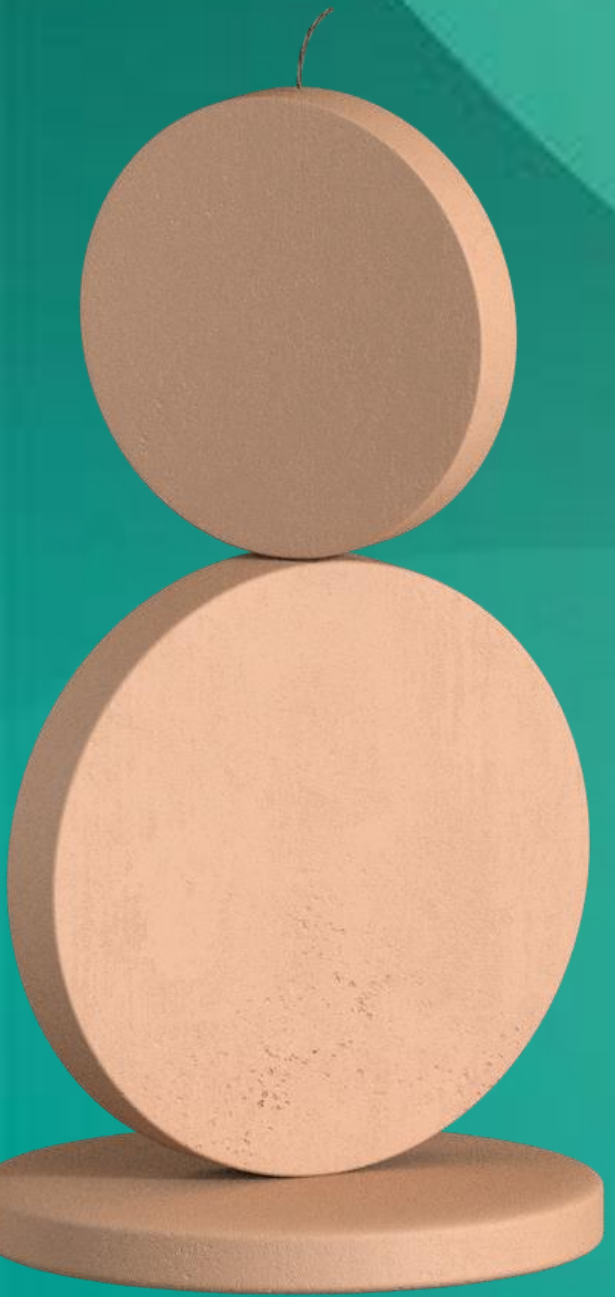
01 ₹1200 only. Zero  
Investment Afterwards

The business plan revolves around a compelling opportunity tied to a ₹ 1200 joining fee. This investment offers individuals a platform to generate income and explore entrepreneurial avenues.



# Types of Income.

- 01 Non Working Income.
- 02 Daily Level ROI Income.
- 03 Daily Capping.



01

# Non Working Income

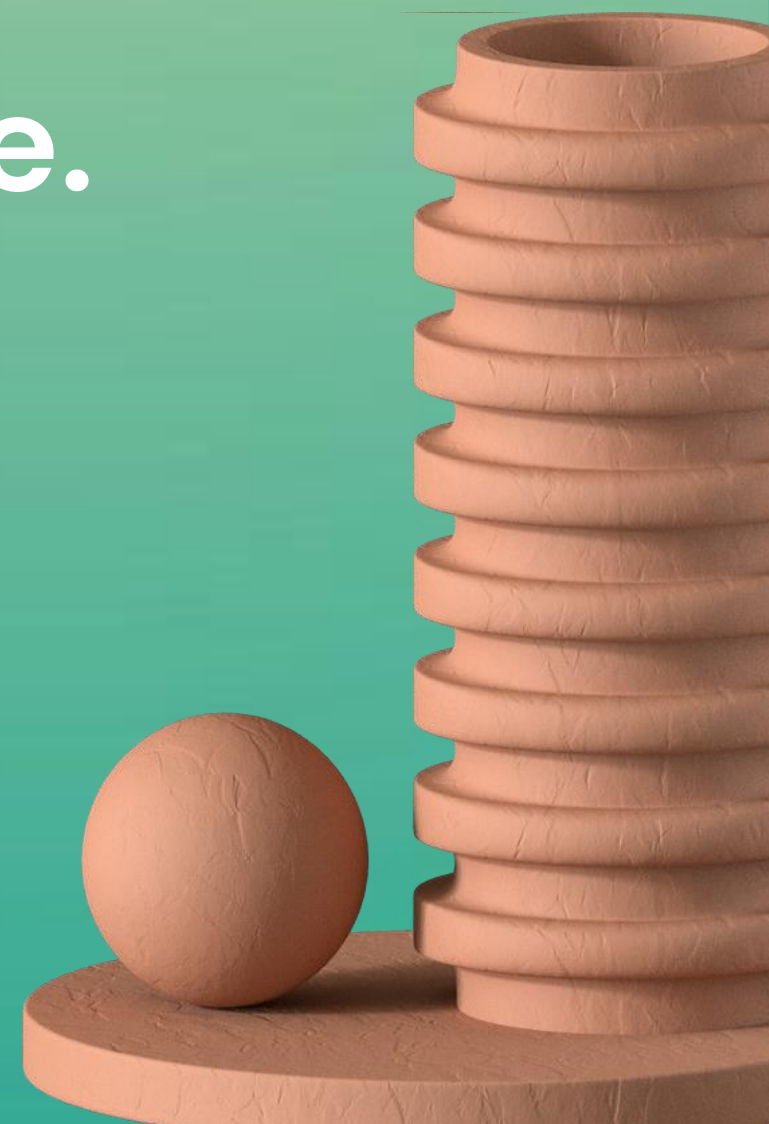
Add ₹1200 in wallet one time.

---

Earn ₹20 daily.

---

$₹20 * 120 \text{ days} = ₹2400.$



02



SKY TOUCH  
MAGICAL

# Working Income

Daily ROI Income.

---

Upto 10 Level \* 120 Continuous Days

---

Users can transfer the money  
instantaneously through banking apps

1st Level = ₹1 Daily.....1 Direct

---

2nd Level = ₹2 Daily.....2 Direct

---

3rd Level = ₹3 Daily.....3 Direct

---

4th Level = ₹4 Daily.....4 Direct

---

5th Level = ₹5 Daily.....6 Direct

---

6th Level = ₹6 Daily.....8 Direct

---

7th Level = ₹7 Daily.....10 Direct

# 03 Daily Capping

**1st to 7th Level = ₹10000**

**9th Level = ₹9 Daily**

- 1250 members in 4th Level
- ₹25000 Daily Capping








**8th Level = ₹8 Daily**

- 250 members in 3rd Level
- ₹15000 Daily Capping

**10th Level = ₹10 Daily**

- 10000 members in 5th Level
- ₹100000 Daily Capping

# Terms & Conditions

-  1. Minimum daily withdrawal, fund transfer ID to ID, and P2P withdrawal amount is 300 Rupees, with the option for pin generation.
-  2. The maximum daily bank withdrawal limit is set at ₹ 100,000.
-  3. A deduction of ₹ 100 is applicable per transaction, along with a 5% TDS (Tax Deducted at Source) on every type of transaction.
-  4. Only one KYC (Know Your Customer) ID is mandatory for each account.
-  5. A mandatory re topup of ₹ 1200 is required after 120 days for any types of income.
-  6. Subsequent to five instances of earning ₹ 1200, a re topup becomes necessary.
-  7. A shopping wallet with ₹ 1200 for online shopping is provided on every ID after every 120 days.



Thank You!



[www.skytouchmagical.com](http://www.skytouchmagical.com)